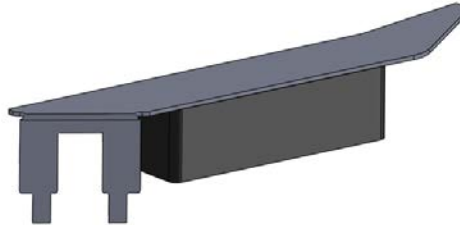


WPANT10049

Wi-Fi Embedded Antenna



Application

A durable and highly efficient Wi-Fi antenna solution for applications where board real estate is at premium.

We can assist your engineers to optimize mounting positions for these antennas in your specific application and can further assist to trouble shoot system integration issues such as TRP/TIS and FCC requirements. We specialize in developing customized Antenna solutions. Please contact sales@worldproducts.com with your specific application requirements.

Electrical Properties

Operating Frequency	2.4 – 2.5 GHz
Approximate Antenna Impedance [Ω]	50 Ω
VSWR (Typical)	< 2:1
Polarization	Linear
Pattern	Near Omni-directional

Mechanical / Environmental Properties

Antenna Dimensions	1.01" x 0.20" x 0.25" (25.7mm X 5mm X 6.25mm)
Antenna Color	Metallic Silver
Operating / Storage Temperature	-40°C to +300°C
Environmental	Meets standards for UL 94V-0
Hazardous Materials	RoHS Compliant

Picture of the Antenna on a Device's Circuit Board

